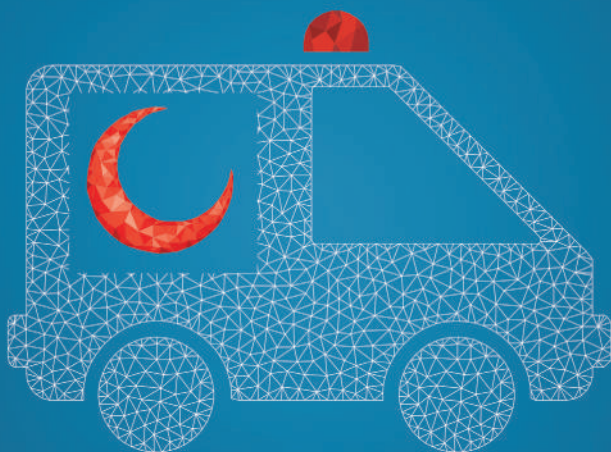


Emergency Department



مستشفى طيبة
TAIBA HOSPITAL



1808088 
www.taibahospital.com



Taiba Hospital Emergency Department consists of 22 bed cubicles, procedure & recovery rooms, cast room, isolation room, & resuscitation bay. Having a network with international counterparts in the field allows us to discuss cutting-edge topics in Emergency Medicine & offer training opportunities for our doctors through our Faculty Development Program to ensure that the highest level of care is maintained.

Our board-certified Emergency Physicians are trained to diagnose, resuscitate all emergency cases, & eliminate the following:

- Life-threatening cases
- Limb-threatening cases
- Sight-threatening cases

For the safety of our patients, we admit cases according to the Canadian Triage & Acuity Scale (CTAS). This system prioritizes them based on how sick they are; therefore, seeing sicker patients first.

Our Staff are also trained in:

- Point of Care Ultrasound to rule out emergent diagnoses at the patients' bedside (Canadian Emergency Ultrasound Society)
- Procedural sedation, when needed to ensure the patients' comfort during procedures

Besides serving today's patients, we are also working to improve the future delivery of emergency care by conducting a number of quality improvement studies exploring new techniques to satisfy our patients. We provide care for patients with any symptoms, clinical background, age group, or gender.