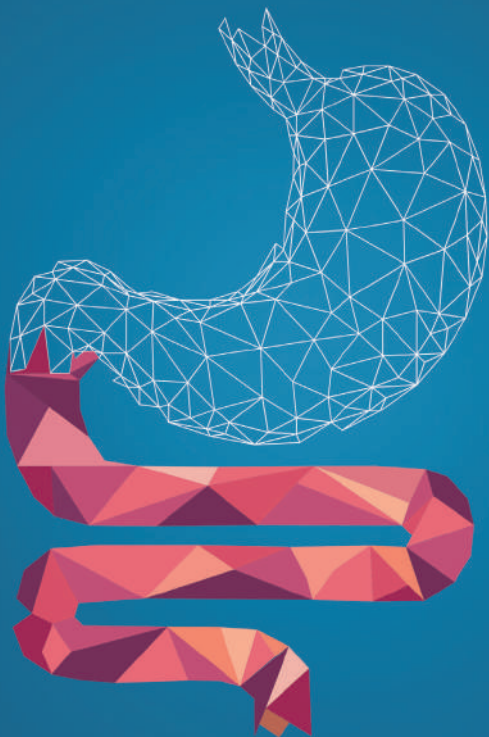


Gastroenterology Department



مستشفى طيبة
TAIBA HOSPITAL



1808088
www.taibahospital.com



Taiba Hospital's Gastroenterology Department uses the most advanced methods in its state-of-the-art facilities to diagnose and treat several conditions in addition to performing a number of Procedures. Conditions treated include:

- Dysphagia
- Gastroesophageal Reflux Disease (GERD)
- Peptic Ulcer Disease (PUD)
- Helicobacter infection (diagnosis and treatment)
- Esophageal & rectal Manometry
- Esophageal 24 H PH study
- Acute and chronic diarrhea
- Acute and chronic constipation
- Irritable Bowel Syndrome (IBS)
- Inflammatory Bowel Disease (Crohn's Disease, Ulcerative Colitis)
- Diverticular disease diagnosis and treatment of diverticulitis
- Management of all cases of GI bleeding
- Colon cancer screening and prevention (including polypectomy)
- Acute and chronic pancreatitis/pancreatic disorders
- Fatty liver, NAFLD/NASH
- All cases of viral hepatitis and liver cirrhosis
- Capsule endoscopy
- Feeding tubes insertion replacement
- Gastric balloons insertion removal
- Esophageal varices band ligation
- Endoscopic retrograde cholangio-pancreatography (ERCP)
- Stretta procedure
- POEM (treatment for achalasia and motility disorders)
- Paracentesis (diagnostic and therapeutic)
- Endoscopic dilatation of gastrointestinal strictures